



9 Meryton House

Longbourn, Windsor, Berkshire

9 MERYTON HOUSE, LONGBOURN, WINDSOR



Details



Grade II Listed Manor House Conversion
Distinctive Architecture
Communal Parkland
Gated With Allocated Parking
3 Bedrooms, 2 Bathrooms
Accessible Via Lift

PROPERTY PROFILE

Set within the exclusive gated Longbourn development, this exceptional three-bedroom, two-bathroom apartment offers a rare blend of period grandeur and modern convenience.

Located in the striking Grade II listed Meryton House, formerly part of Clewer Manor, this residence retains its historic charm while providing contemporary comfort. Originally built in 1841 for Edmund Foster JP and later part of Haileybury School, the manor has been thoughtfully converted into a collection of elegant homes, all surrounded by beautifully maintained parkland.

Inside, the apartment is designed to honour its heritage while catering to modern lifestyles. A welcoming entrance hall leads to a spacious sitting and dining room, where part-vaulted ceilings, exposed wooden beams, and a feature fireplace create a warm and characterful ambiance. Dual-aspect windows and skylights flood the space with natural light, enhancing its open and airy feel. The stylish kitchen is both functional and elegant, offering fitted units, integrated appliances, and a dedicated breakfast area.

The principal bedroom serves as a serene retreat, complete with built-in wardrobes and a private en suite shower room. Two additional bedrooms, both with built-in storage, provide flexible accommodation while the beautifully appointed main bathroom completes the layout.

Externally, the property benefits from allocated parking spaces, additional visitor parking, and access to extensive landscaped gardens, offering residents a peaceful and picturesque environment to enjoy. With its unique combination of period elegance and contemporary practicality, this home presents an outstanding opportunity to live in a historic and idyllic setting.

Location

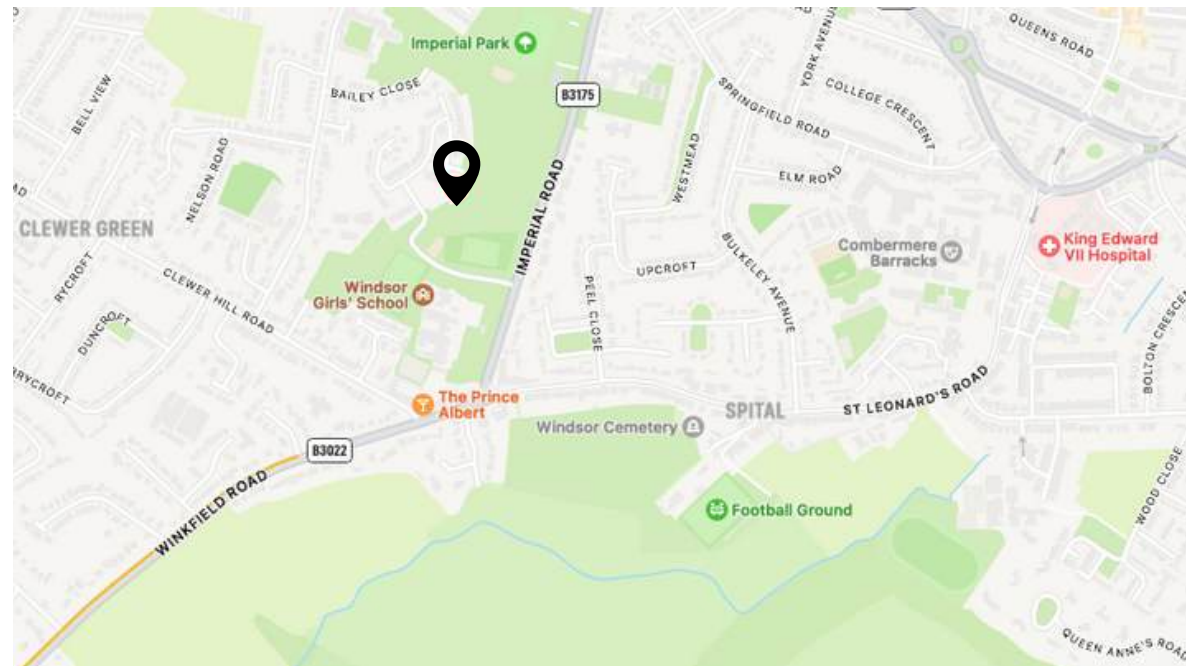
THE NEIGHBOURHOOD

Longbourn is set within several acres of parkland adjacent to Imperial Park, just one mile from Windsor town centre and close to Windsor Great Park.

Local amenities are within easy reach, while extensive shopping, dining, and leisure options can be found in Windsor.

The M4 (J6) provides access to the M25, Heathrow, and London, while Windsor's train stations offer connections to London Paddington (via Slough) in 29 minutes and London Waterloo in just over an hour.

9 Meryton House
Longbourn
Windsor
Berkshire
SL4 3TW





9 MERYTON HOUSE, LONGBOURN, WINDSOR

9 MERYTON HOUSE, LONGBOURN, WINDSOR





9 MERYTON HOUSE, LONGBOURN, WINDSOR





9 MERYTON HOUSE, LONGBOURN, WINDSOR

9 MERYTON HOUSE, LONGBOURN, WINDSOR



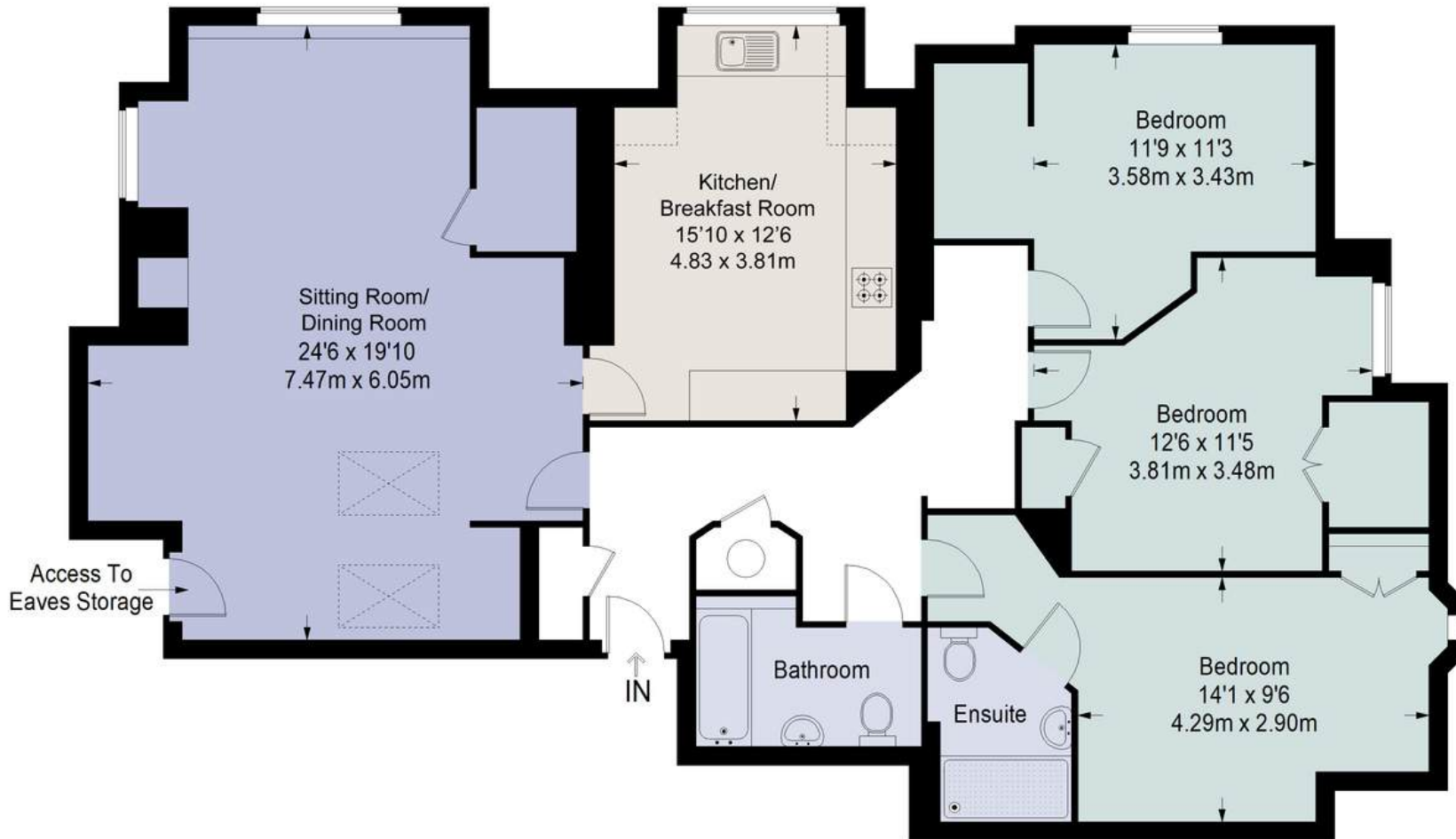


9 MERYTON HOUSE, LONGBOURN, WINDSOR

9 MERYTON HOUSE, LONGBOURN, WINDSOR



Meryton House



Second Floor = 1332 sq ft

Approximate Gross Internal Area
SECOND FLOOR = 1332 sq ft / 123.74 sq m
Total = 1332 sq ft / 123.74 sq m

This plan is for layout guidance only. Not drawn to scale unless stated. Windows and door openings are approximate. Whilst every care is taken in the preparation of this plan, please check all dimensions, shapes and compass bearings before making any decisions reliant upon them. (ID357409)

Your Managing Partners

Fisher & Partners is transforming the way
property is sold.

We're committed to providing exceptional
service from start to sale, to make your home
buying or selling experience as smooth and
successful as possible.

Team



Nicholas Canham & Sebastian Stanford-Smith
Managing Partners, Windsor Region

Fisher & Partners

☎ 01753 303711

🖱 www.fisherandpartners.com

✉ windsor@fisherandpartners.com



SCAN TO BOOK A VIEWING

Contact Us
Today

